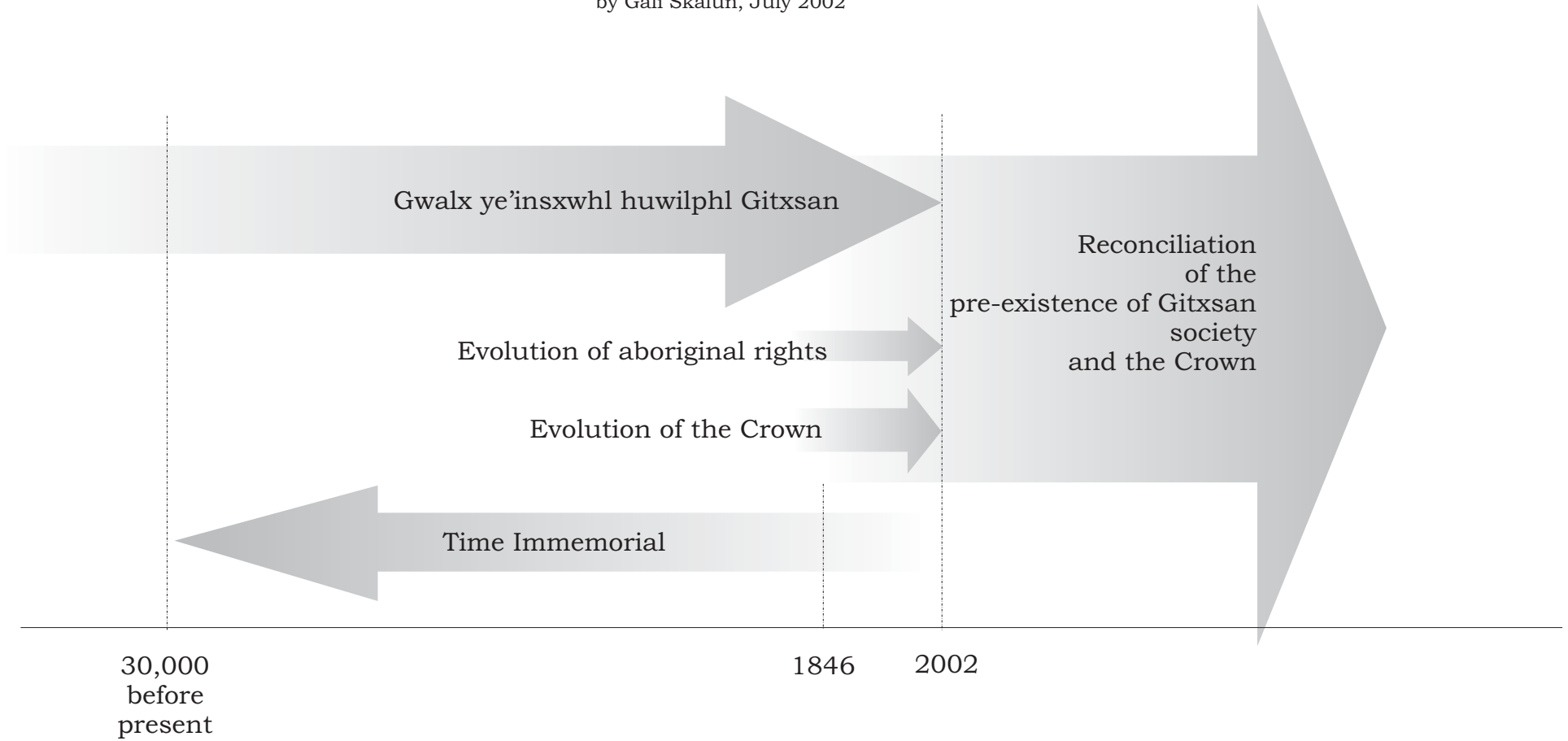


RECONCILIATION  
In Perspective  
by Gali Skalun, July 2002



# Gitxsan Basics

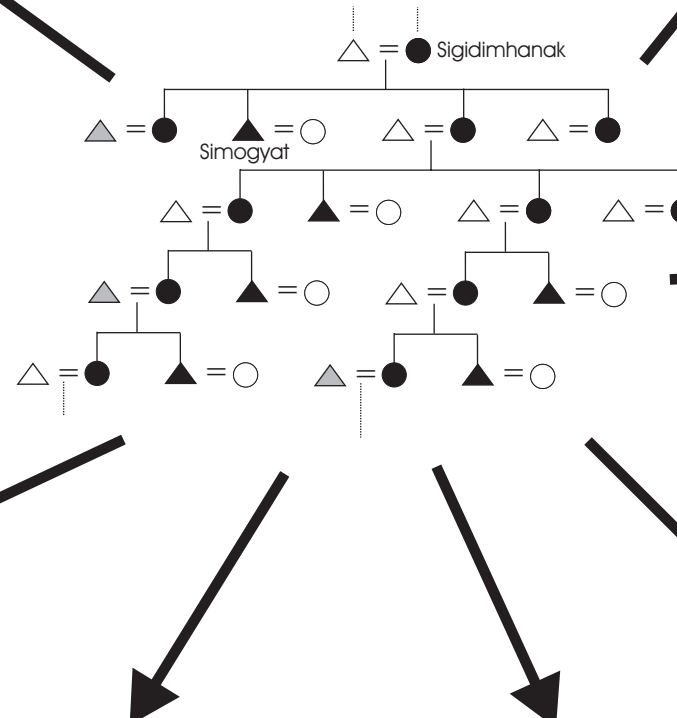
By Gali Skalun, July, 2002

Salient Characteristics

## Wilphl Gitxsan

The Most Fundamental Entity of Gitxsan Society

Gitxsan Society is matrilineal; that is, citizenship and inherency flows through the mother's side.



### Gwalx Ye'inswx

Each wilphl Gitxsan has its treasure: its inherency, assets that are real and not real, handed down from generation to generation, held in perpetuity, never extinguished. Assets include: its wilnaatahl (close relatives), lax yiphl wilp (lands and resources therein), adaawx (ancient oral history), ayook (laws that dictate behavior), limx oo'ii (time immemorial songs that link the wilp to its lax yip), waaim taa (ancient potlatch seat names). Wilp essence and identity derive from **gwalx ye'inswx**.

### LaxYip

Each wilphl Gitxsan hold rights and title to and thus have jurisdiction over their territory and resources therein in accordance to ayookim Gitxsan (Gitxsan Law).

### Pdek

Each wilphl Gitxsan is also associated to a pdek (aka phratry, clans). Each wilphl Gitxsan is also one of four pdek: Gistkaast (Fireweed), Lax Seel (Frog), Lax Gibuu (Wolf), or Lax Skiik (Eagle)

### Adaawx

Each wilphl Gitxsan has an oral history that recounts their creation and migration since the ice age. The adaawx also attaches the wilphl Gitxsan to their lax yip. It also includes associated animal crests and symbols, limx oo'y (Time immemorial songs), limx sinaahl (breath songs), and limx nox nok (spirit songs).

### Ayookim Gitxsan

Each wilphl Gitxsan and its citizens are required to behave in accordance to Gitxsan Law. They include citizenship, adoption, marriage, property, use of resources, contact at potlatches, etc.

### Liligit

Aka potlatch, feast. The liligit is the most significant venue where the very essence of gwalx ye'inswx is formally given cadence. It is a gathering of high ranking guests of other pdek (phratries) to witness the inner workings of the hosting wilp and its pdek.

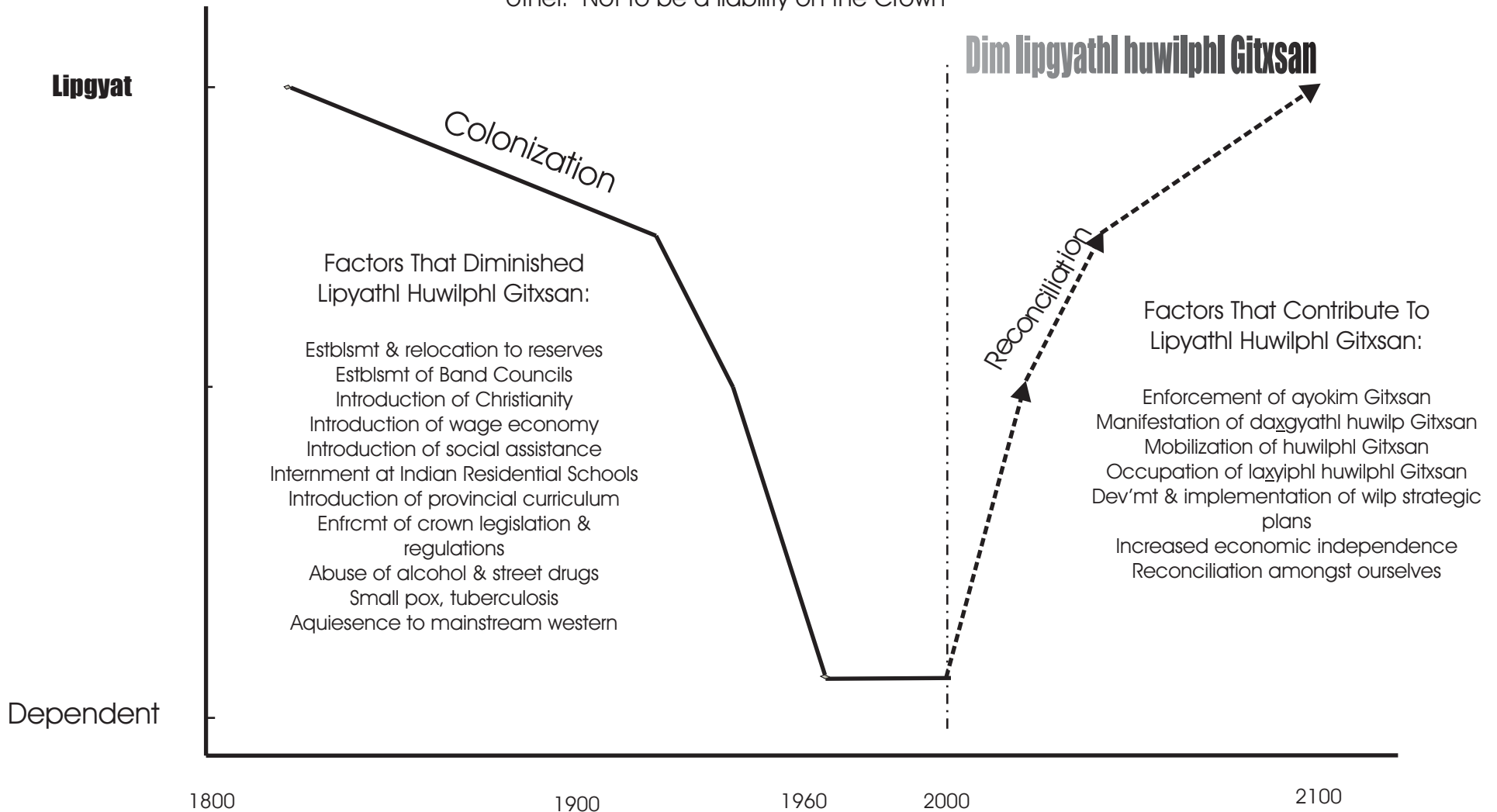
### Daxgyat

Each wilphl Gitxsan has the daxgyat, authority and power, to manifest their essence as they see fit for the best good of the wilp.

# Understanding Lipgyat

By Gali Skalun, July, 2002

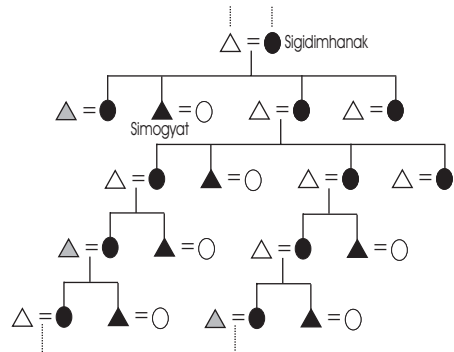
To be free. Not to be a liability on each other. Not to be a liability on the Crown



# Lipgyat Strategy

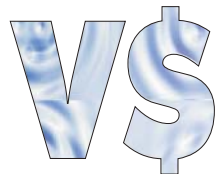
By Gali Skalun, July, 2002

Dim lipyathl huwilp Gitxsan.



Wilphl Gitxsan

The Most Fundamental Entity



Gitxsan

Values and Wealth

## Mobilize Huwilphl Gitxsan

1. Manifest daxyathl wilp
2. Enforce ayokim Gitxsan.
3. Develop and implement a strategic plan for each wilp
4. Occupy, develop, and invest in laxyiphl wilp.
5. Paradigm shift from state of dependence to lipgyathl wilp.
6. Continuously take stock of assets and build

## Reinforce Gitxsan Values and Generate Wealth

7. Embrace Gitxsan values
8. Generate wealth through
  - . Investments
  - . Financial instruments with crown
  - . Gitxsan business apparatus



## Entrench Gitxsan Rights and Title

- 9.. Engage in brush fire litigation
- 10.. Engage in Delgamuukw v Queen Retrial
11. Through legislation and regulation
12. Through political agreement with crown

Lipgyat Strategy continued



Anoyaahl Gitxsan

Build Capacity

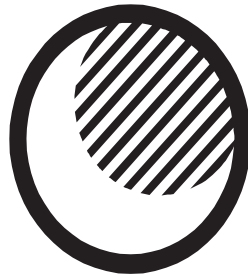
- 13. Take stock of capacity of wilp
- 14. Develop Gitxsan Millenium: A Comprehensive Education Plan



Marketing

Marketing

- 15. Develop and implement a Gitxsan marketing



Tribal Boundaries

Tribal Boundaries

- 16. Reconciliation of wilp boundaries
- 17. Secure outer territorial boundaries of the Gitxsan